

# Flamaster

www.flamasterusa.com

Project name: \_\_\_\_\_

Location: \_\_\_\_\_

Item#: \_\_\_\_\_ QTY: \_\_\_\_\_

Model#: \_\_\_\_\_

## Gas Range

### Model: FLM-R36



- *Alpha brass control components.*
- *Stainless steel front, back riser, lift off shelf.*
- *Heavy-duty cast iron grates with aeration bowl.*  
*Standing pilot light for individual burners.*
- *Manual gas control.*
- *30,000BTU(8.8KW)/Burner.*
- *33,000BTU (9.7KW) Static oven.*
- *Oven interior side guides and bottom porcelain coated.*
- *Oven thermostat adjusts from 200°F -500°F (93°C -260°C).*
- *Oven with 2 racks, 3 positions.*
- *Flue located on back of unit for ample ventilation.*
- *Easy to remove full width crumb tray.*
- *Range is fully serviceable from the front.*
- *Stainless steel legs standard, casters options.*
- *One year parts and labor warranty.\**

**Toll Free: +1(800)373-8699**

**flamaster@chefmindgroup.com**

Address: 1189S Jellick Ave,  
City of Industry, CA 91748



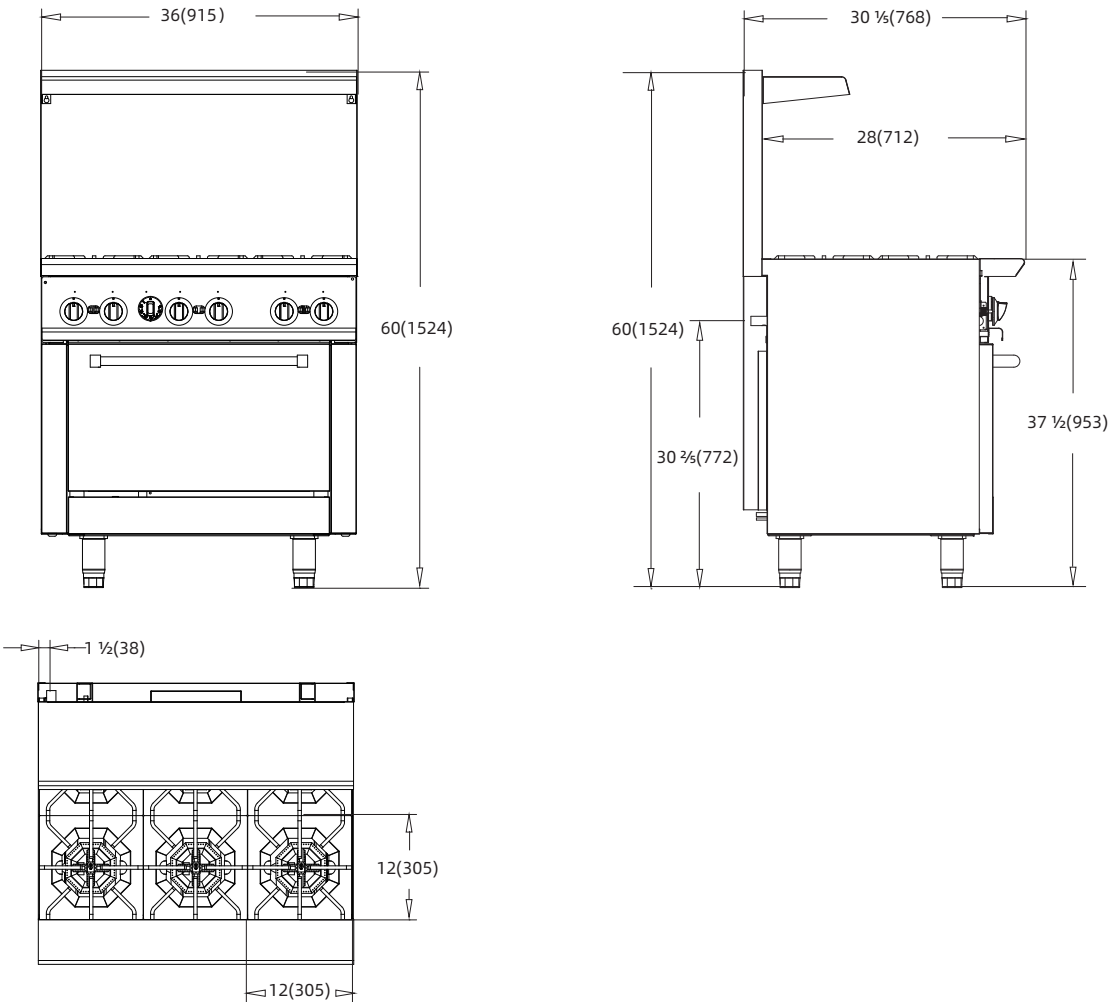
Gas Range

Model: FLM-R36

•CSA design certified NSF listed

MODEL	GAS RANGE DESCRIPTION	WIDTH	TOTAL BURNERS	
			TOP OPEN BURNERS	Bottom Oven
FLM-R36	36" Range - 6 top burners	36"	6	1

OVERALL DIMENSIONS	TOTAL BTU		STANDARD OVEN CAVITY MEASURES	NET WEIGHT	SHIPPING DIMENSIONS	Shipping Weight
	NG	LP				
36 X 31 7/8 X 60	213,000	190,000	26 X 22 1/2 X 13 3/4	364 lbs.(165 kg)	39 3/8 X 36 3/8 X 43 7/16	467 lbs.(212 kg)



1 YEAR PARTS WARRANTY

