

# Flamaster

www.flamasterusa.com

Project name: \_\_\_\_\_

Location: \_\_\_\_\_

Item#: \_\_\_\_\_ QTY: \_\_\_\_\_

Model#: \_\_\_\_\_

## Gas Range

### Model: FLM-R48



- Alpha brass control components.
- Stainless steel front, back riser, lift off shelf.
- Heavy-duty cast iron grates with aeration bowl.
- Standing pilot light for individual burners.
- Manual gas control.
- 30,000BTU(8.8KW)/Burner.
- 33,000BTU (9.7KW) Static oven.
- Oven interior side guides and bottom porcelain coated.
- Oven thermostat adjusts from 200°F -500°F (93°C -260°C).
- Oven with 2 racks, 3 positions.
- Flue located on back of unit for ample ventilation.
- Easy to remove full width crumb tray.
- Range is fully serviceable from the front.
- Stainless steel legs standard, casters options.
- One year parts and labor warranty.\*

**Toll Free: +1(800)373-8699**  
**flamaster@chefmindgroup.com**  
Address: 1189S Jellick Ave,  
City of Industry, CA 91748



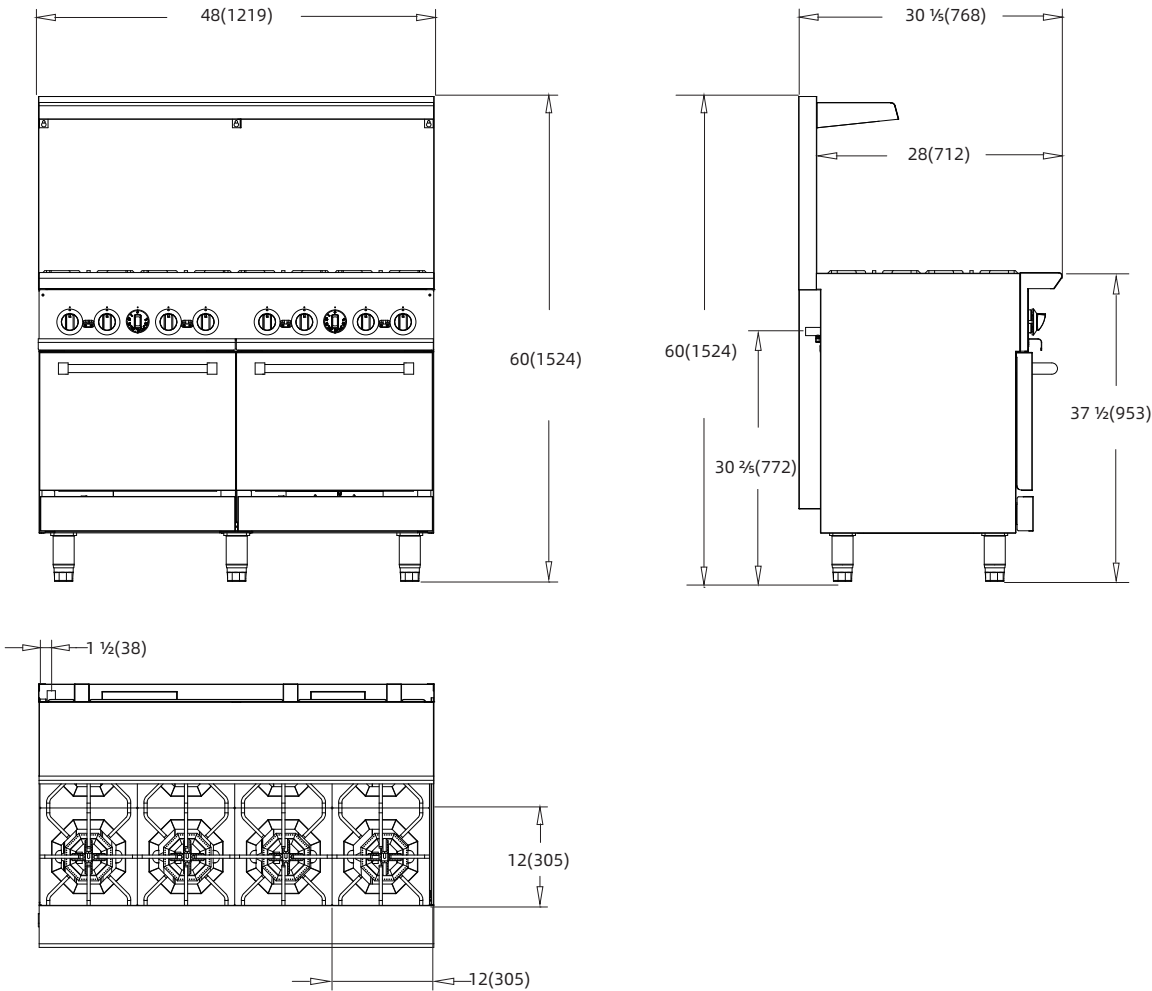
Gas Range

Model: FLM-R48

•CSA design certified NSF listed

MODEL	GAS RANGE DESCRIPTION	WIDTH	TOTAL BURNERS	
			TOP OPEN BURNERS	Bottom Oven
FLM-R48	48" Range - 8 top burners	48"	8	2

OVERALL DIMENSIONS	TOTAL BTU		STANDARD OVEN CAVITY MEASURES	NET WEIGHT	SHIPPING DIMENSIONS	Shipping Weight
	NG	LP				
48 X 31 3/4 X 60	306,000	272,000	20 X 22 1/2 X 13 3/4	525 lbs.(238 kg)	51 1/2 X 36 3/8 X 43 7/16	643 lbs.(292 kg)



1 YEAR PARTS WARRANTY

